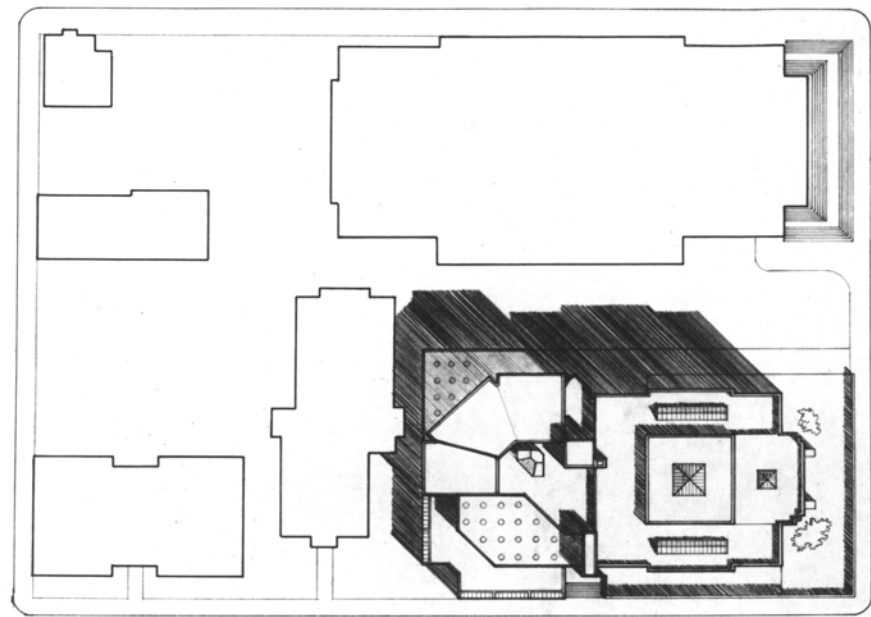
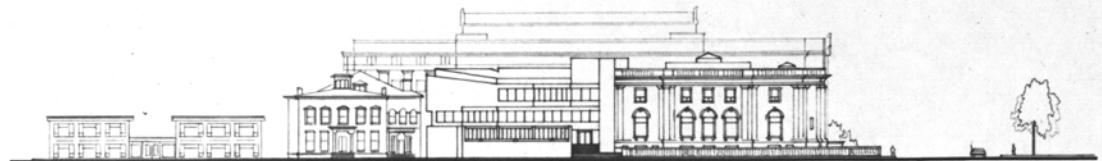
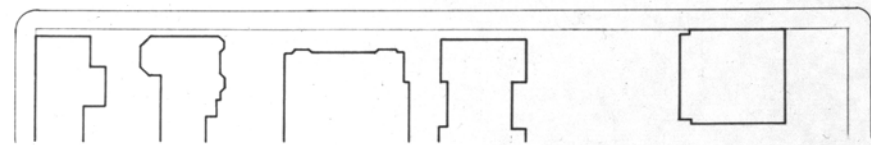


NEW HAVEN PUBLIC LIBRARY



TEMPLE STREET

ELM STREET



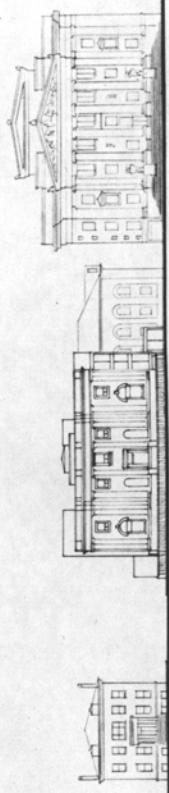
united society

ecclesiastical society

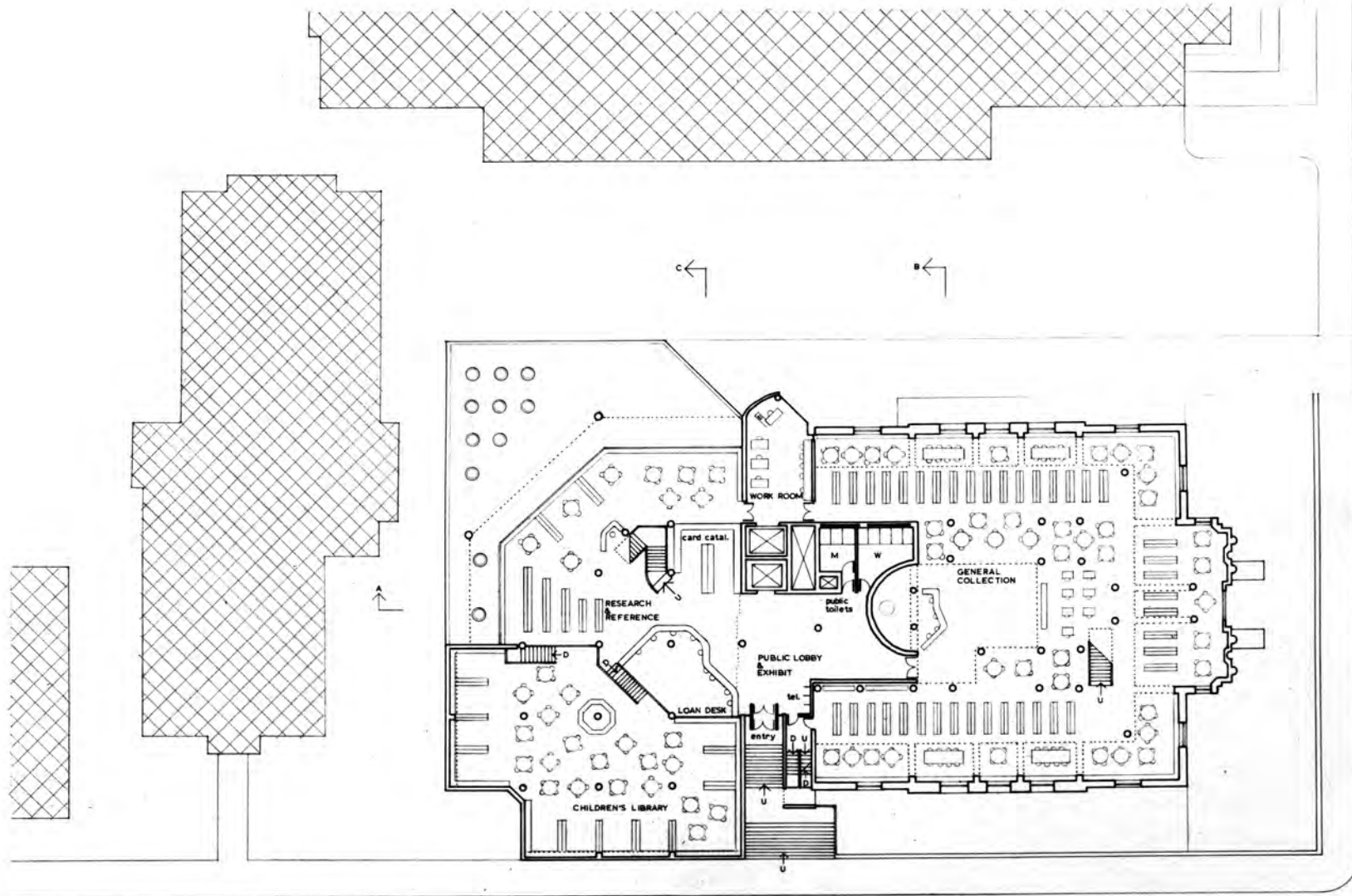
new haven public library
courthouse

elm street

new haven green

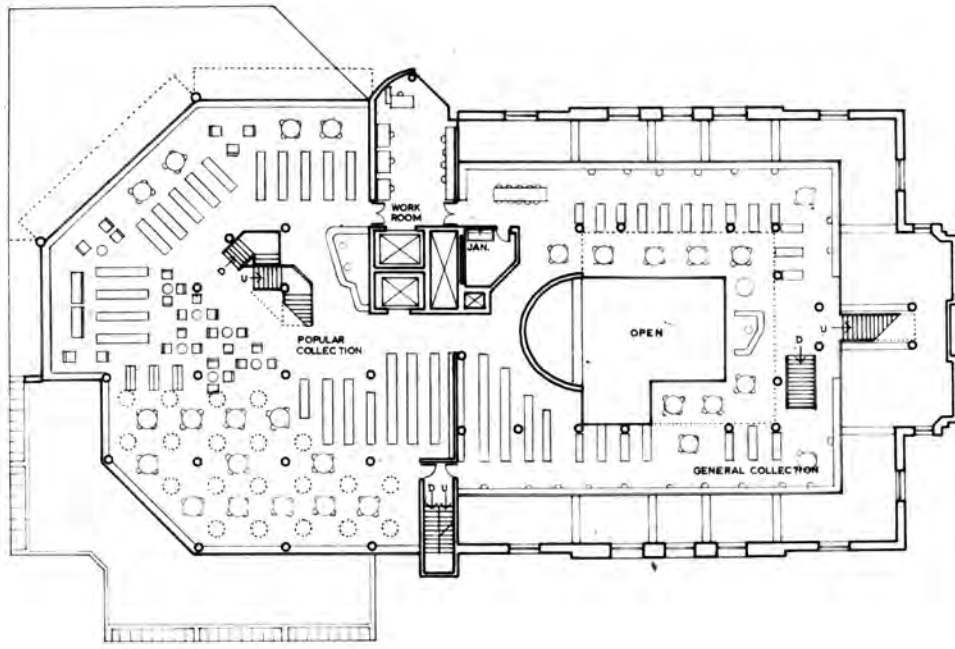


1" = 40'-0"

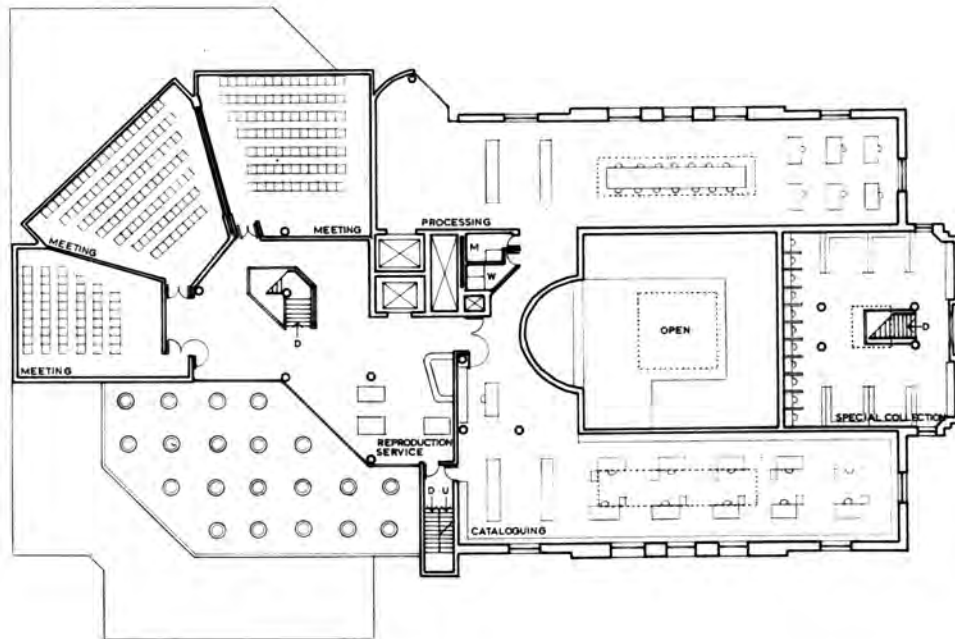


↑
ENTRY LEVEL
1/8" = 1'-0"

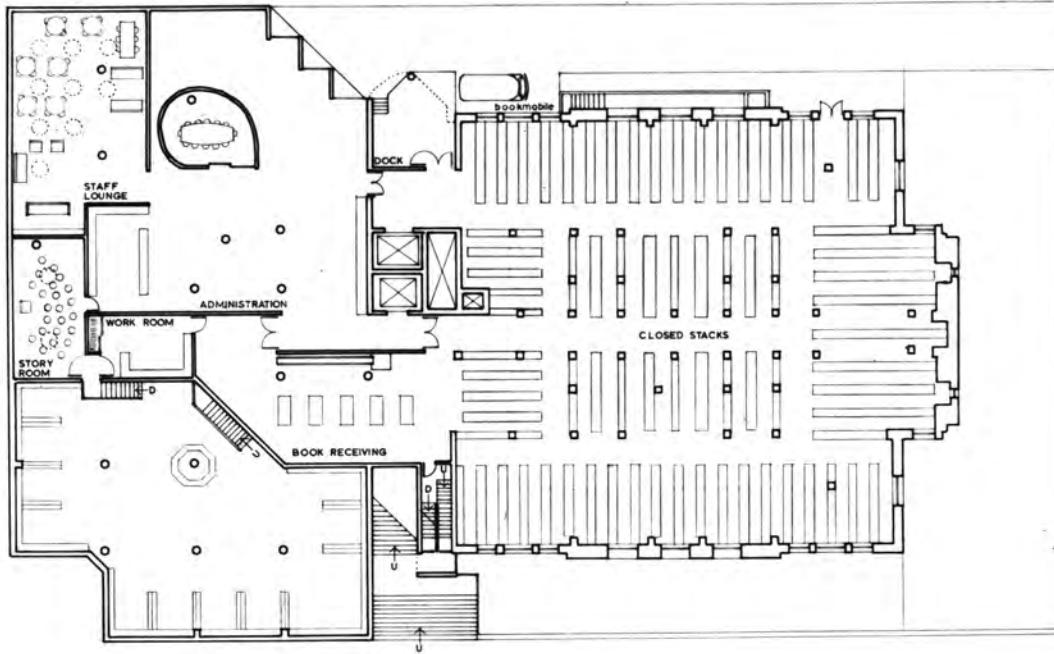




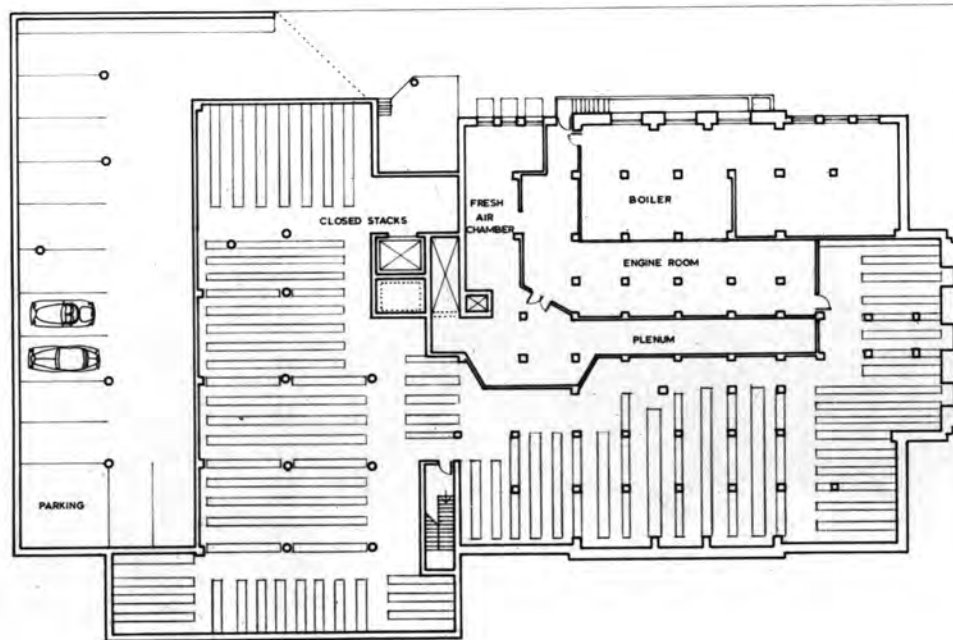
2
READING ROOMS
1/16" = 1'-0"



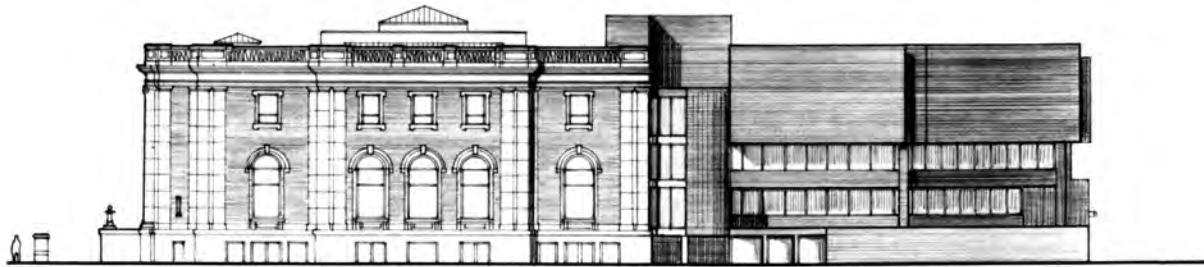
3
PUBLIC MEETING
PROCESSING
1/16" = 1'-0"



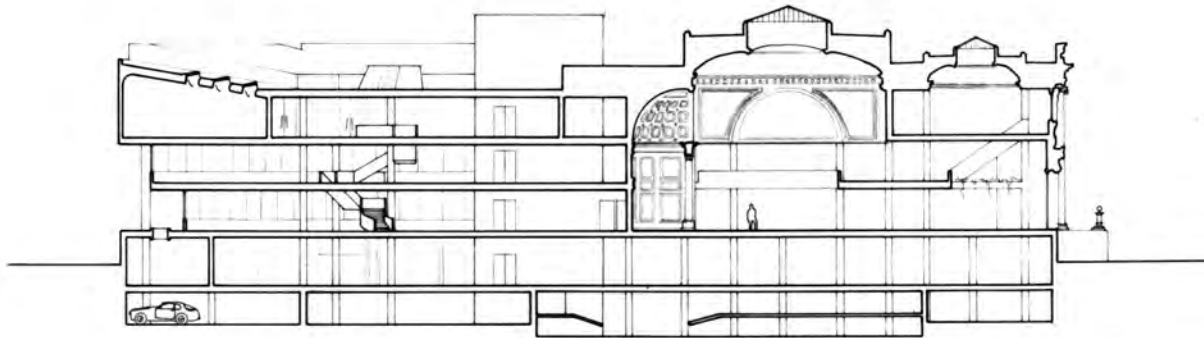
1B
 BOOK RECEIVING
 ADMINISTRATION
 1/16" = 1'-0"



2B
 SUB BASEMENT STORAGE
 1/16" = 1'-0"



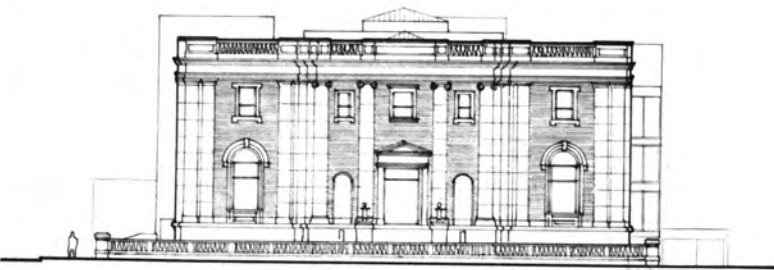
SIE
SIDE ELEVATION
1/16" = 1'-0"



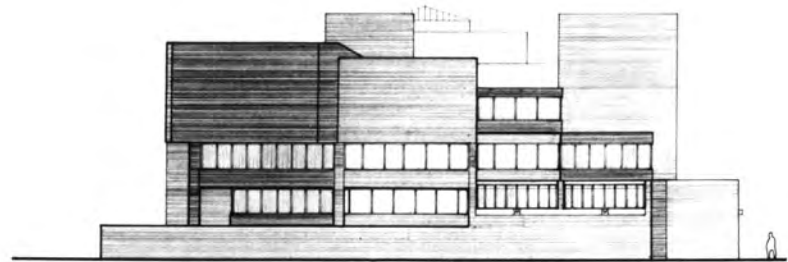
AA
LONGITUDINAL SECTION
1/16" = 1'-0"



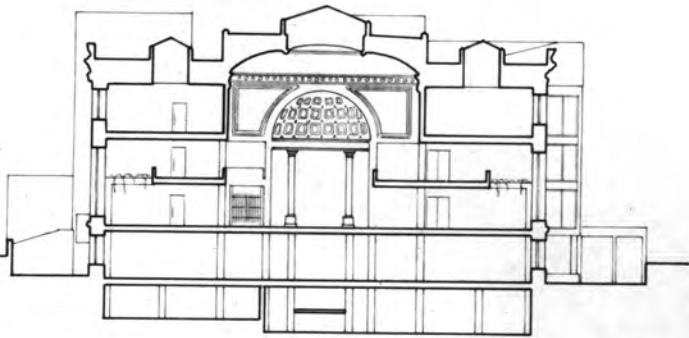
NW
ENTRY ELEVATION
1/16" = 1'-0"



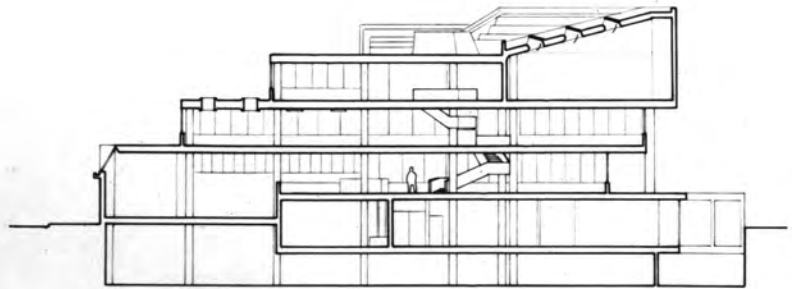
SW
SIDE ELEVATION
1/16" = 1' - 0"



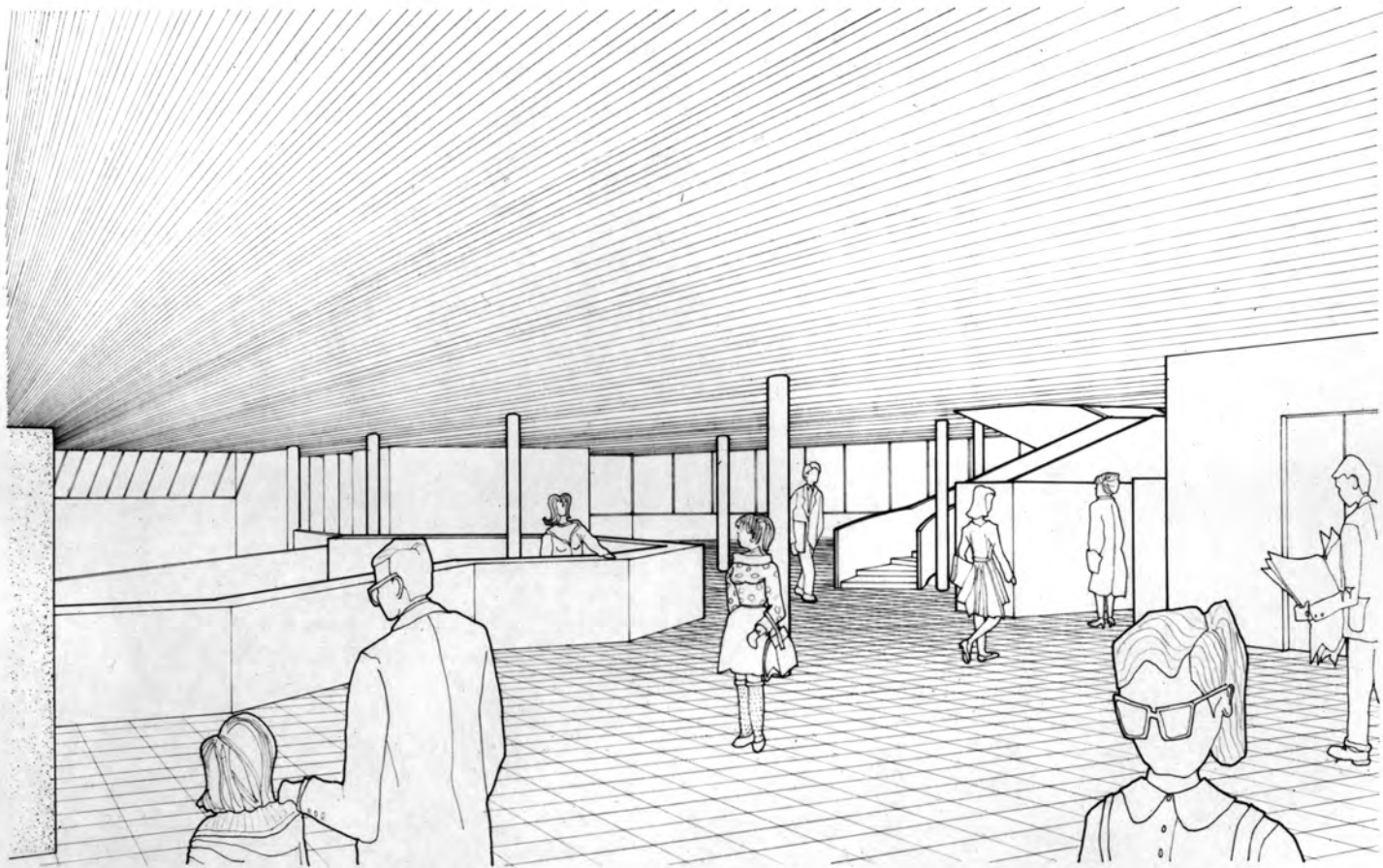
NE
SIDE ELEVATION
1/16" = 1' - 0"



BB
TRANSVERSE SECTION
1/16" = 1' - 0"



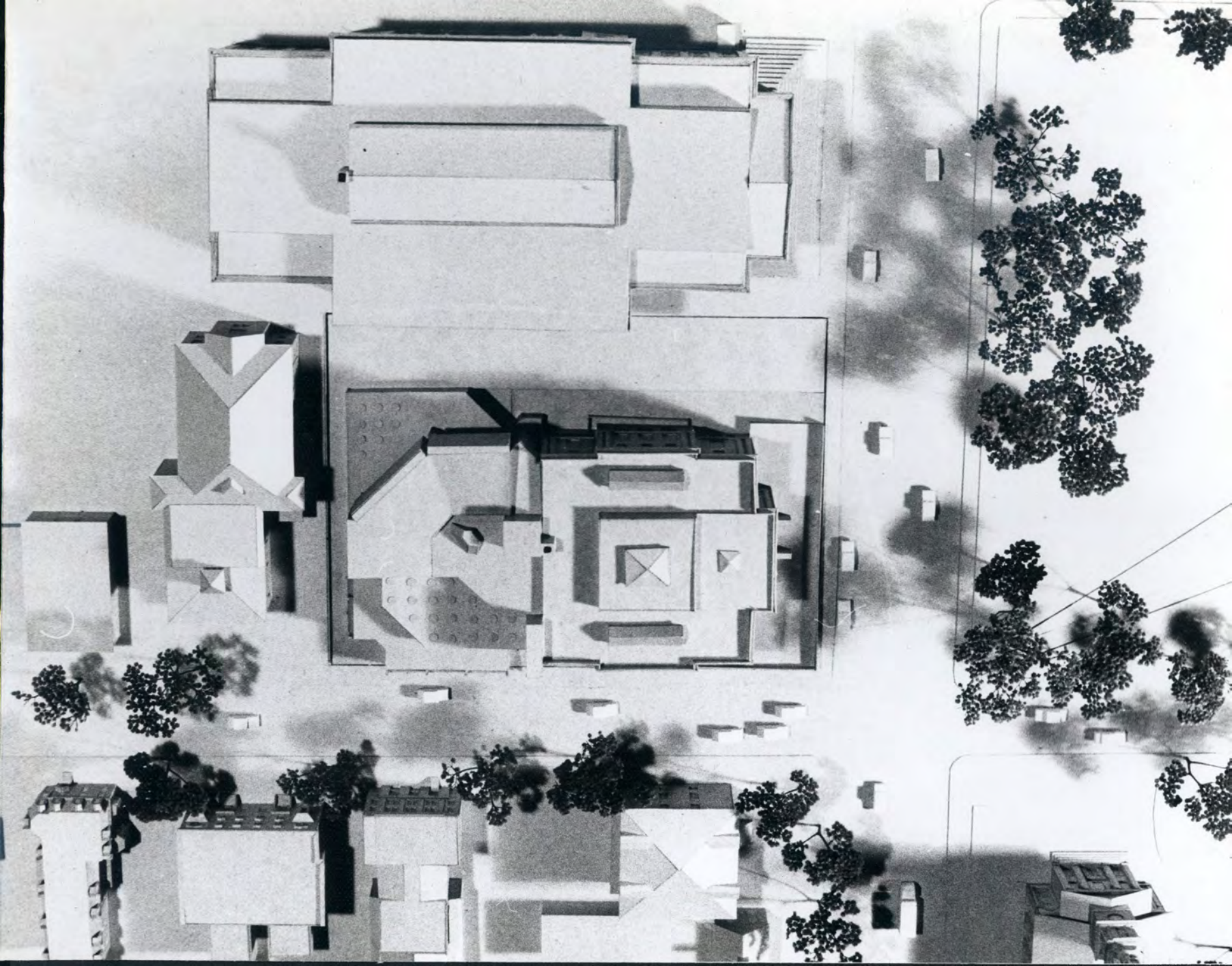
CC
TRANSVERSE SECTION
1/16" = 1' - 0"

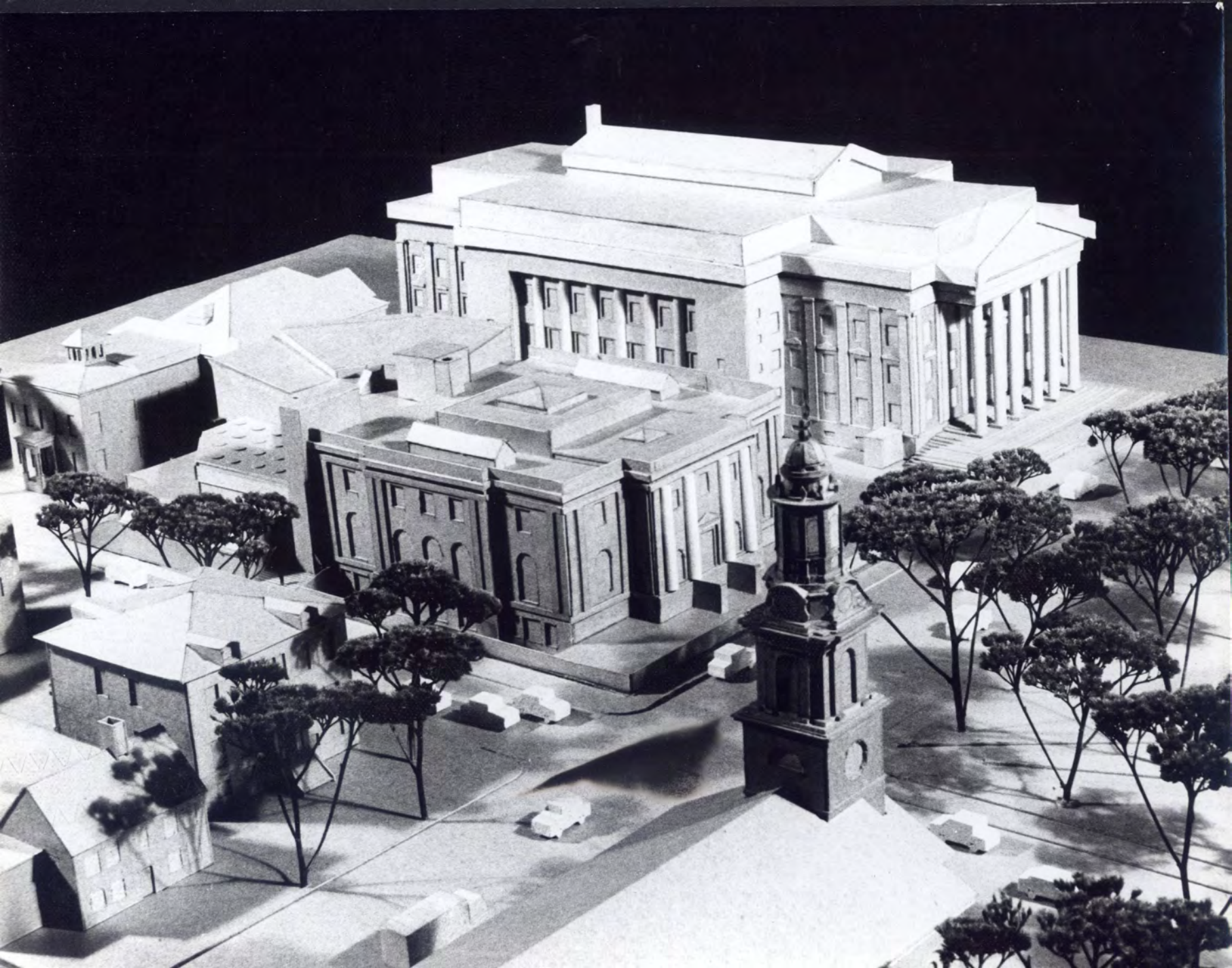


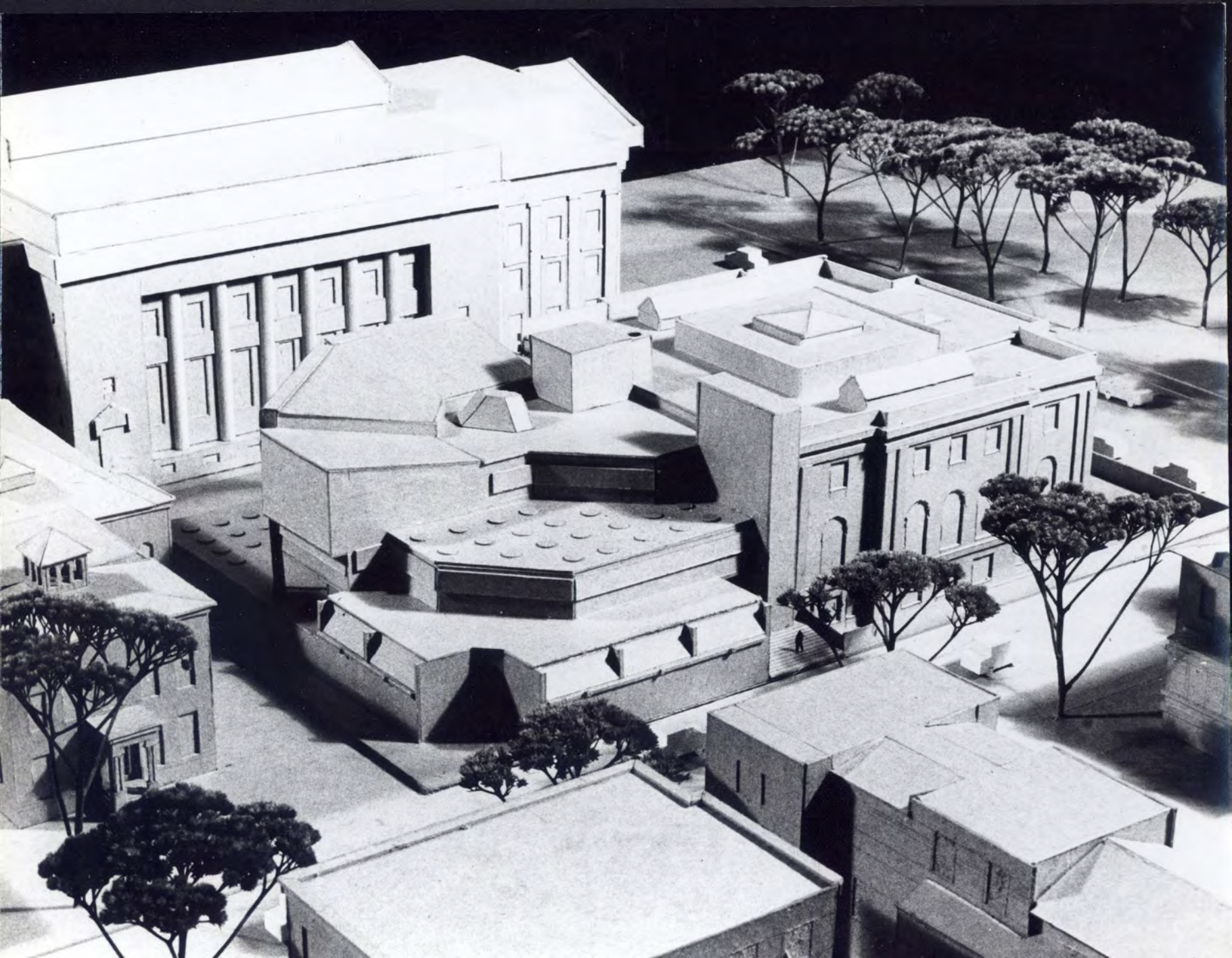
LOBBY



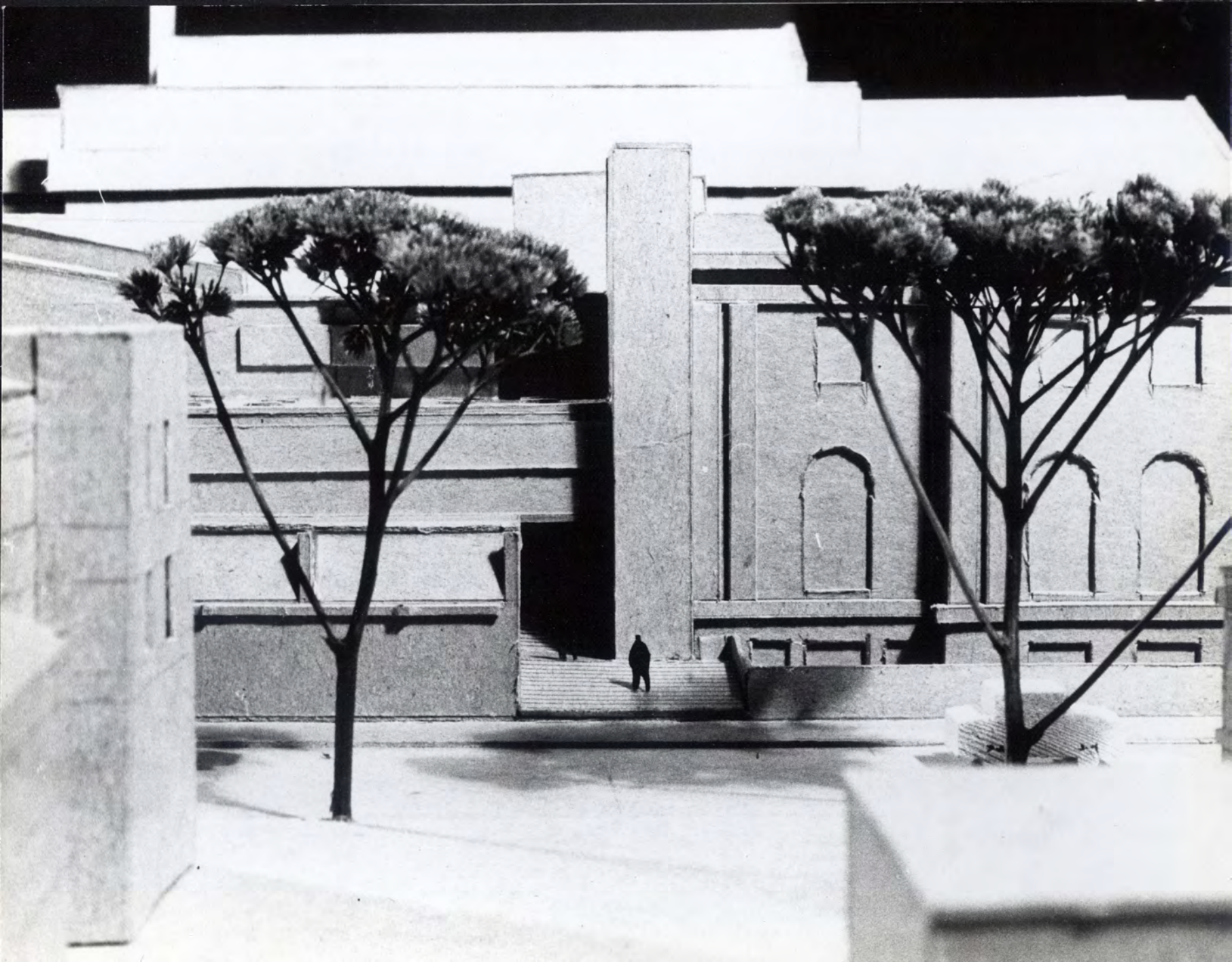
GENERAL READING ROOM













1

2

3



NHPL 1991

Renovations/Additions
Hardy Holzman Associates

- 1 rear view of Stacks [L]
- 2 connection between Existing [R] & Addition [L]
- 3 view from Elm Street with Addition [R]

